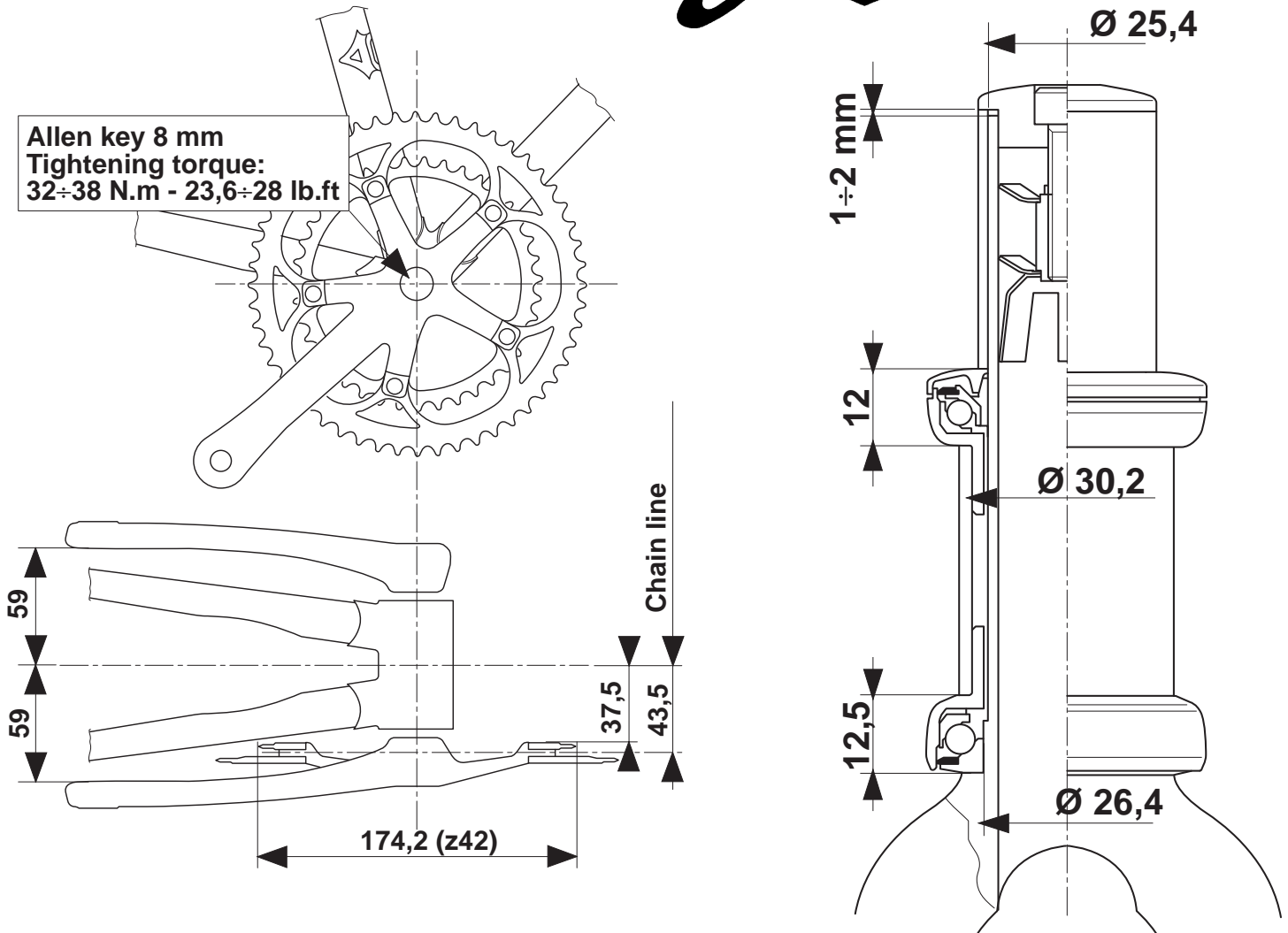
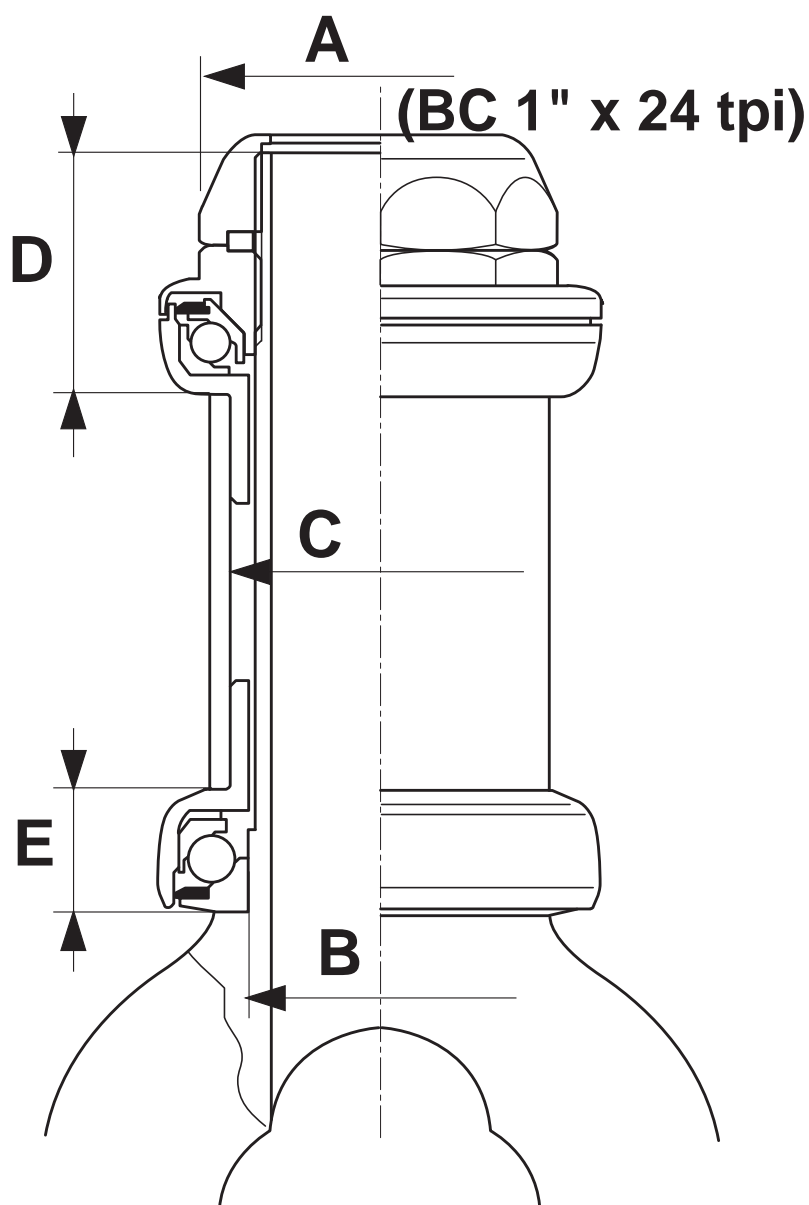


# Campagnolo®



# 1998 Technical Specifications

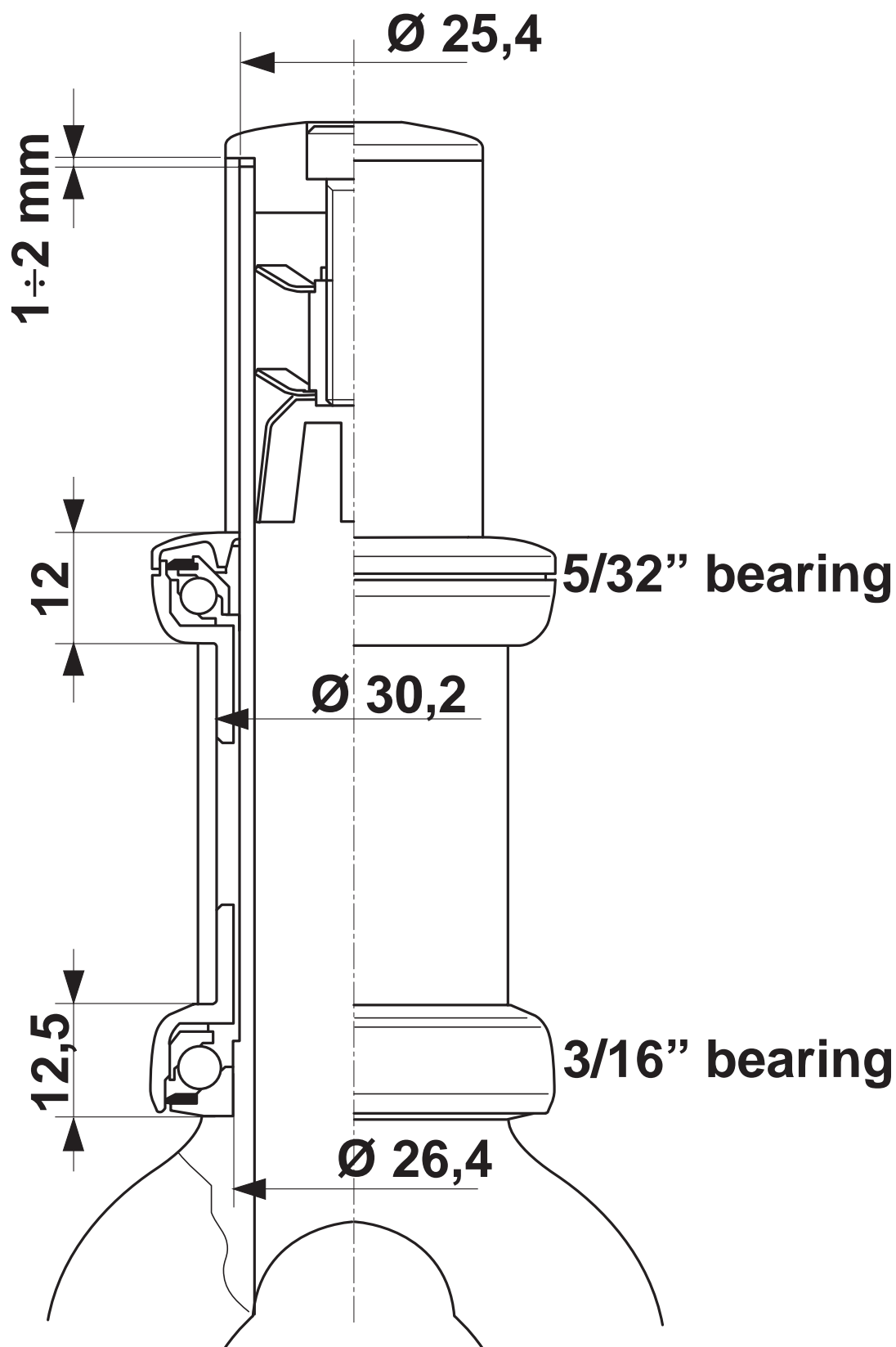
# HEADSETS



model	A	B	C	D	E
<b><i>Record</i></b>	<b>32</b>	<b>26.4</b>	<b>30.2</b>	<b>24</b>	<b>12.5</b>
<b><i>Chorus</i></b>	<b>32</b>	<b>26.4</b>	<b>30.2</b>	<b>24</b>	<b>12.5</b>
<b><i>Athena</i></b>	<b>32</b>	<b>26.4</b>	<b>30.2</b>	<b>24</b>	<b>12.5</b>
<b><i>Veloce</i></b>	<b>32</b>	<b>26.4</b>	<b>30.2</b>	<b>26</b>	<b>15.5</b>
<b><i>Mirage</i></b>	<b>32</b>	<b>26.4</b>	<b>30.2</b>	<b>26</b>	<b>15.5</b>

# THREADLESS HEADSETS

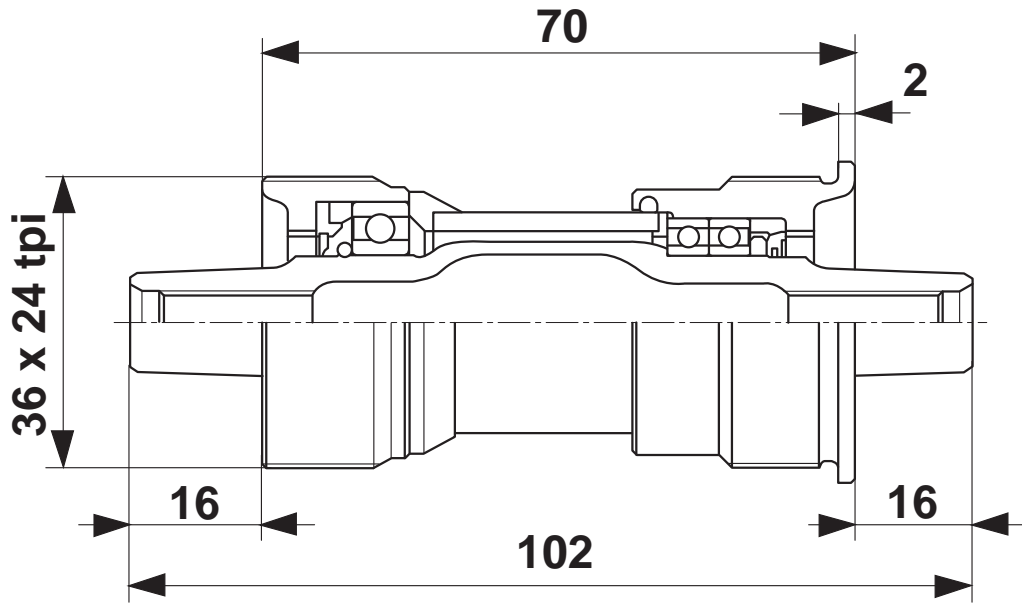
## *Record, Chorus*



# BOTTOM BRACKETS

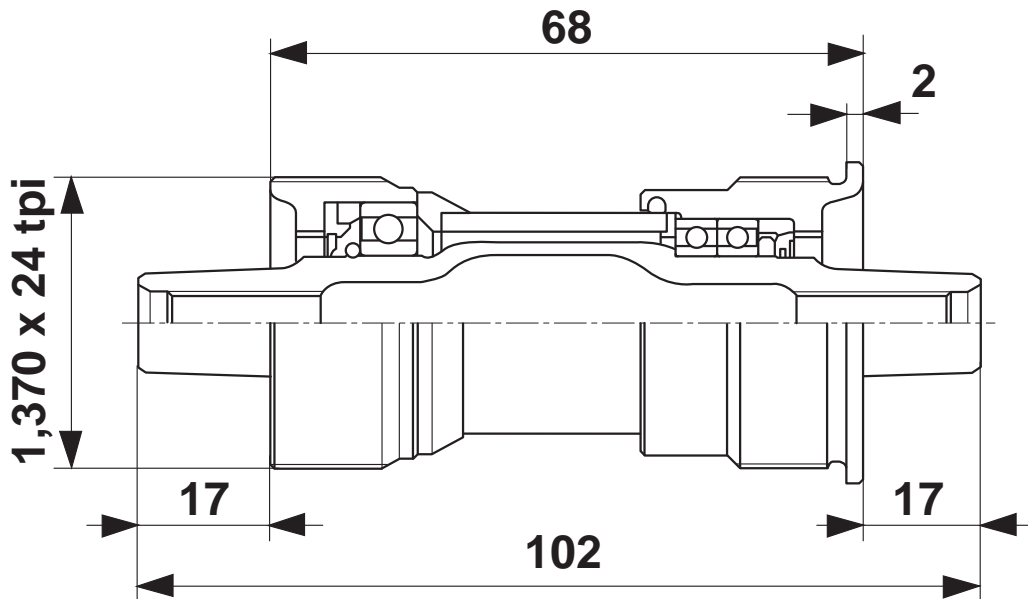
## *Record, Chorus*

ITALIAN



Tightening torque: 70 N.m - 51,66 lb.ft

ENGLISH

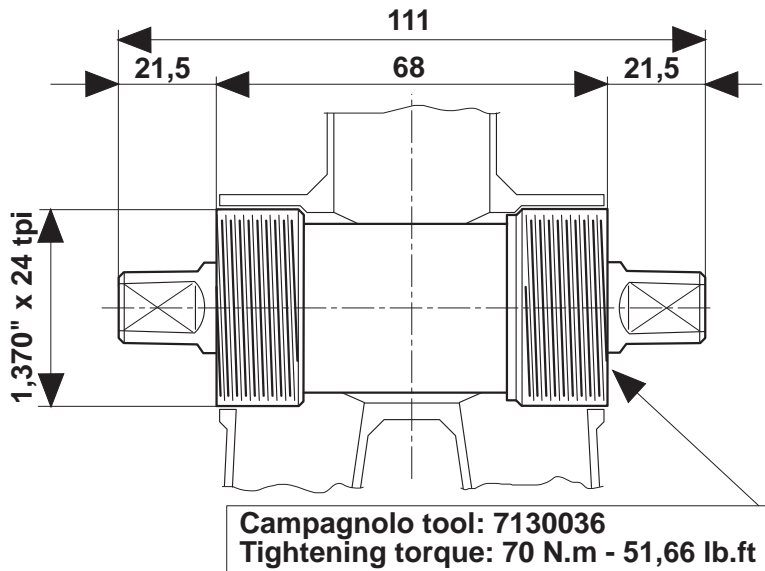


Tightening torque: 70 N.m - 51,66 lb.ft

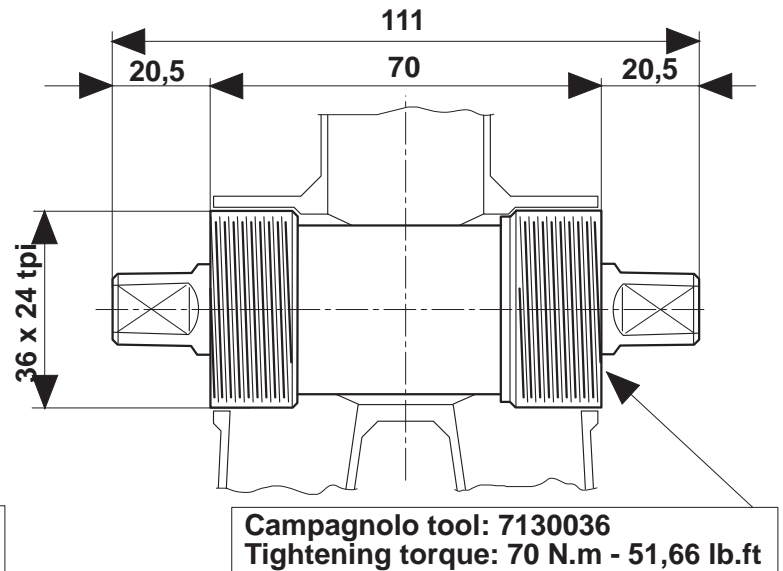
# BOTTOM BRACKETS

## *Athena, Racing T*

### ENGLISH

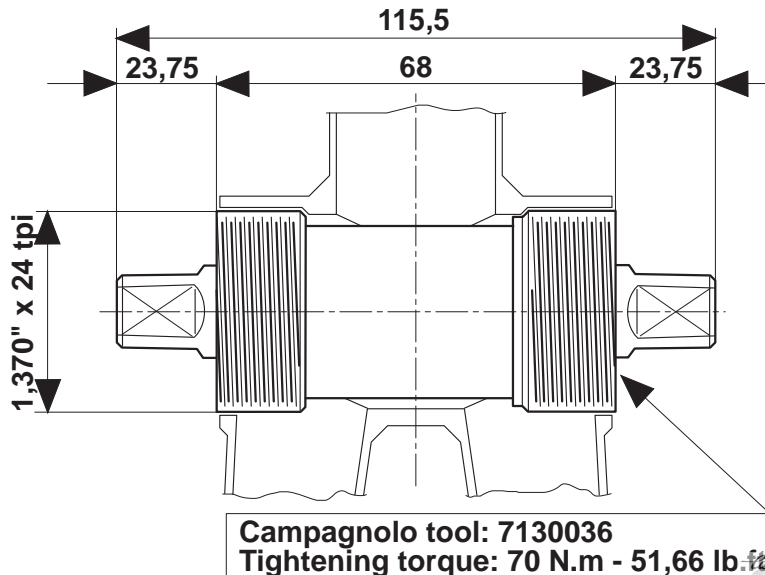


### ITALIAN

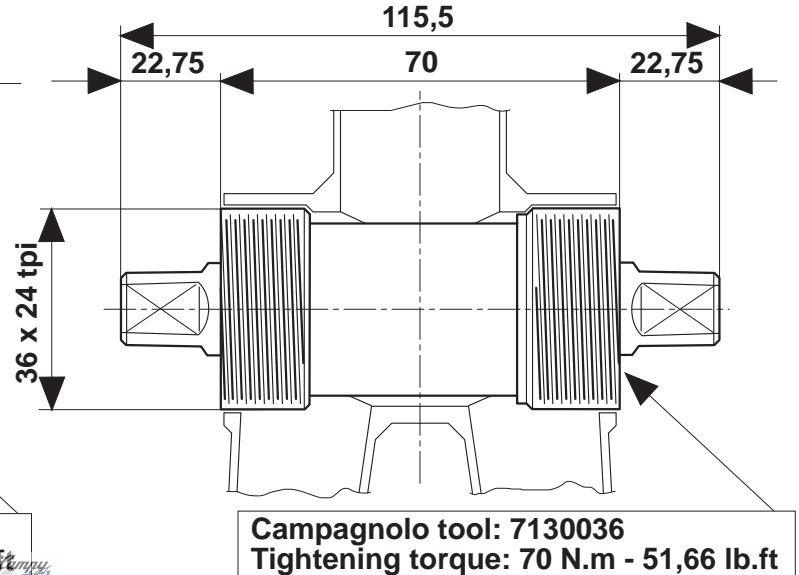


## *For Racing T w/ seat tube 32mm or greater*

### ENGLISH



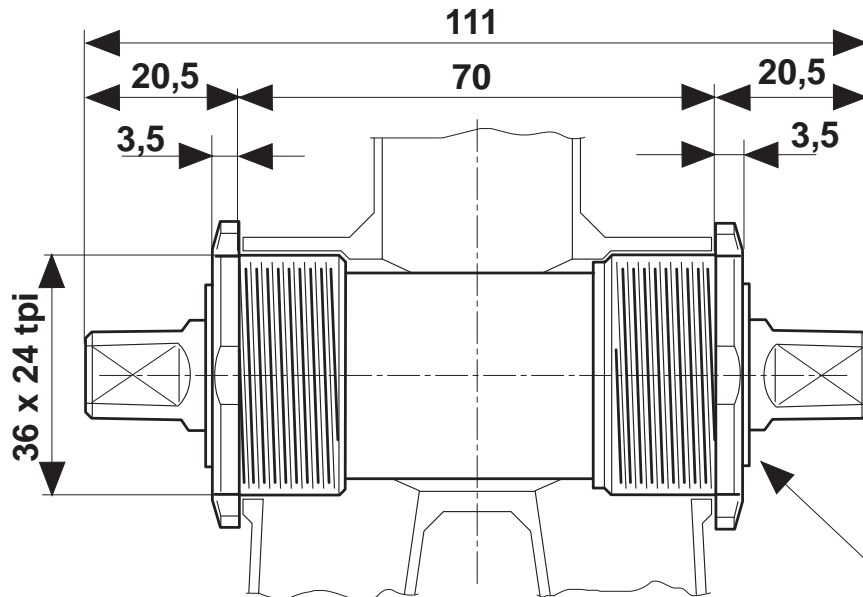
### ITALIAN



# BOTTOM BRACKETS

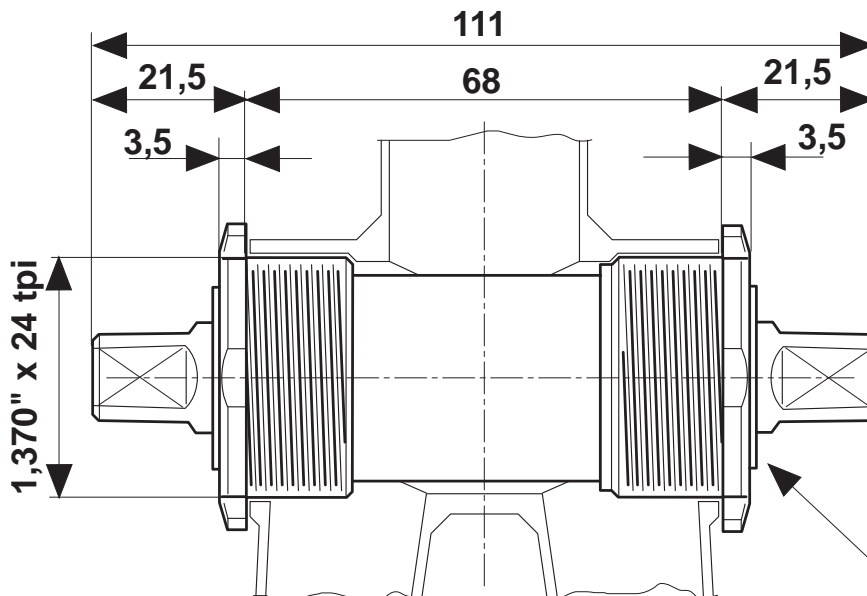
## *Veloce, Veloce T*

### **ITALIAN**



Campagnolo tool: 1134180  
Tightening torque: 70 N.m - 51,66 lb.ft

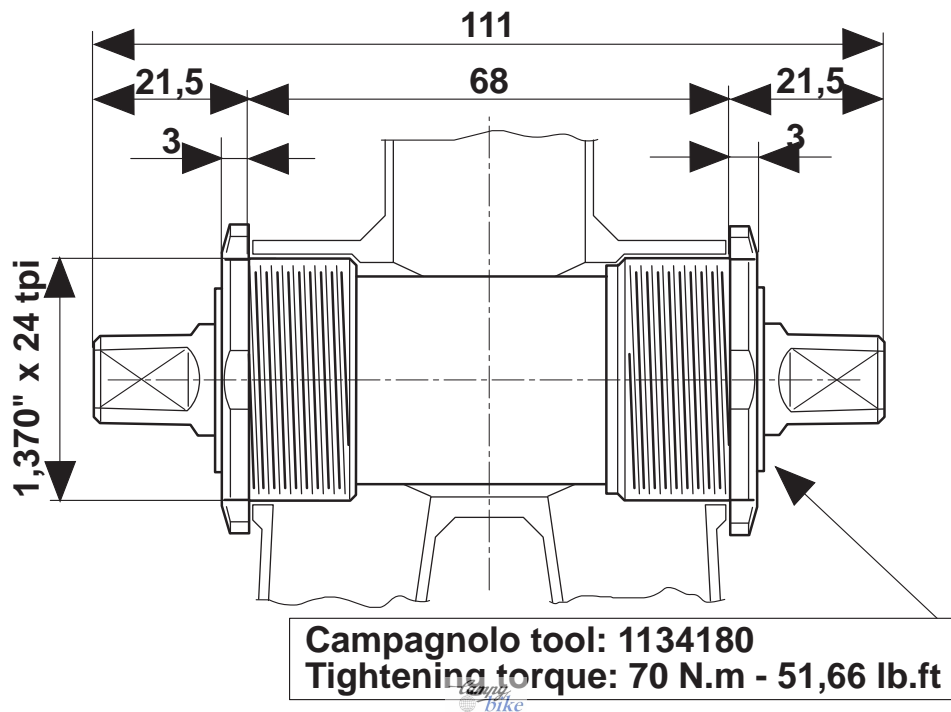
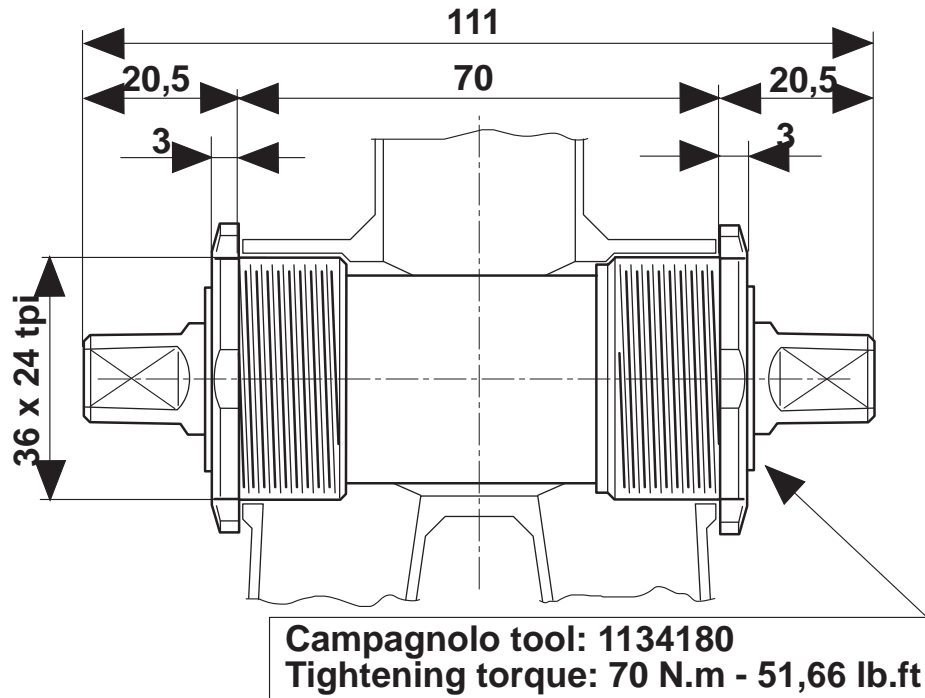
### **ENGLISH**



Campagnolo tool: 1134180  
Tightening torque: 70 N.m - 51,66 lb.ft

# BOTTOM BRACKETS

## *Mirage, Avanti, Mirage T*

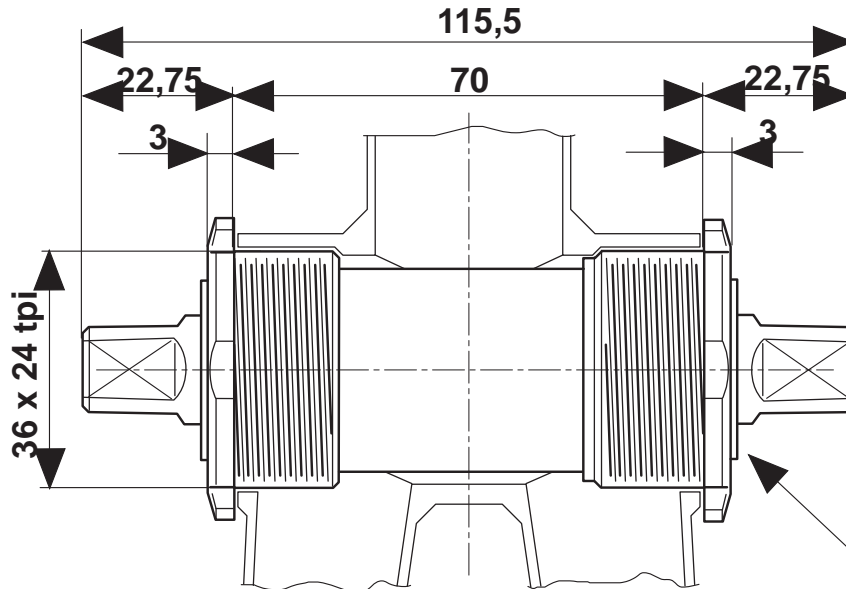


# BOTTOM BRACKETS

*Veloce T, Mirage T*

32mm or greater seat tube

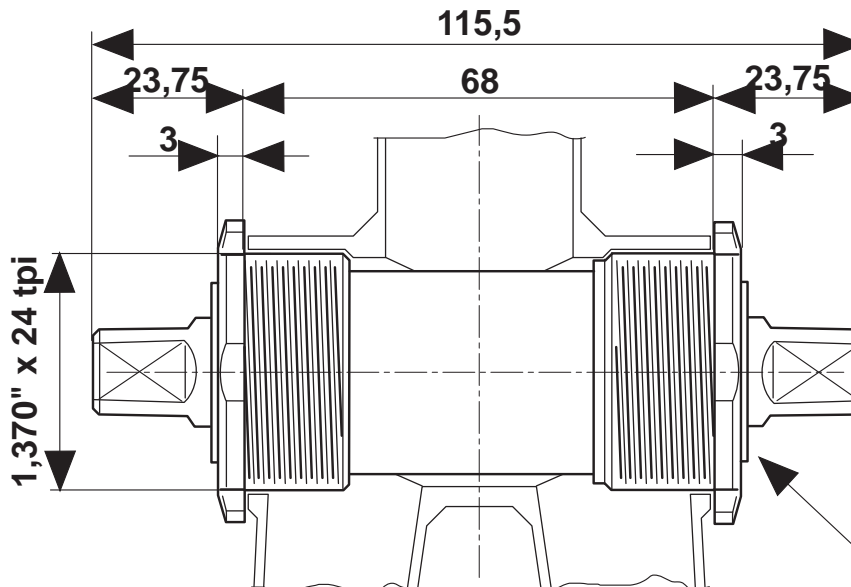
## ITALIAN



Campagnolo tool: 1134180

Tightening torque: 70 N.m - 51,66 lb.ft

## ENGLISH



Campagnolo tool: 1134180

Tightening torque: 70 N.m - 51,66 lb.ft

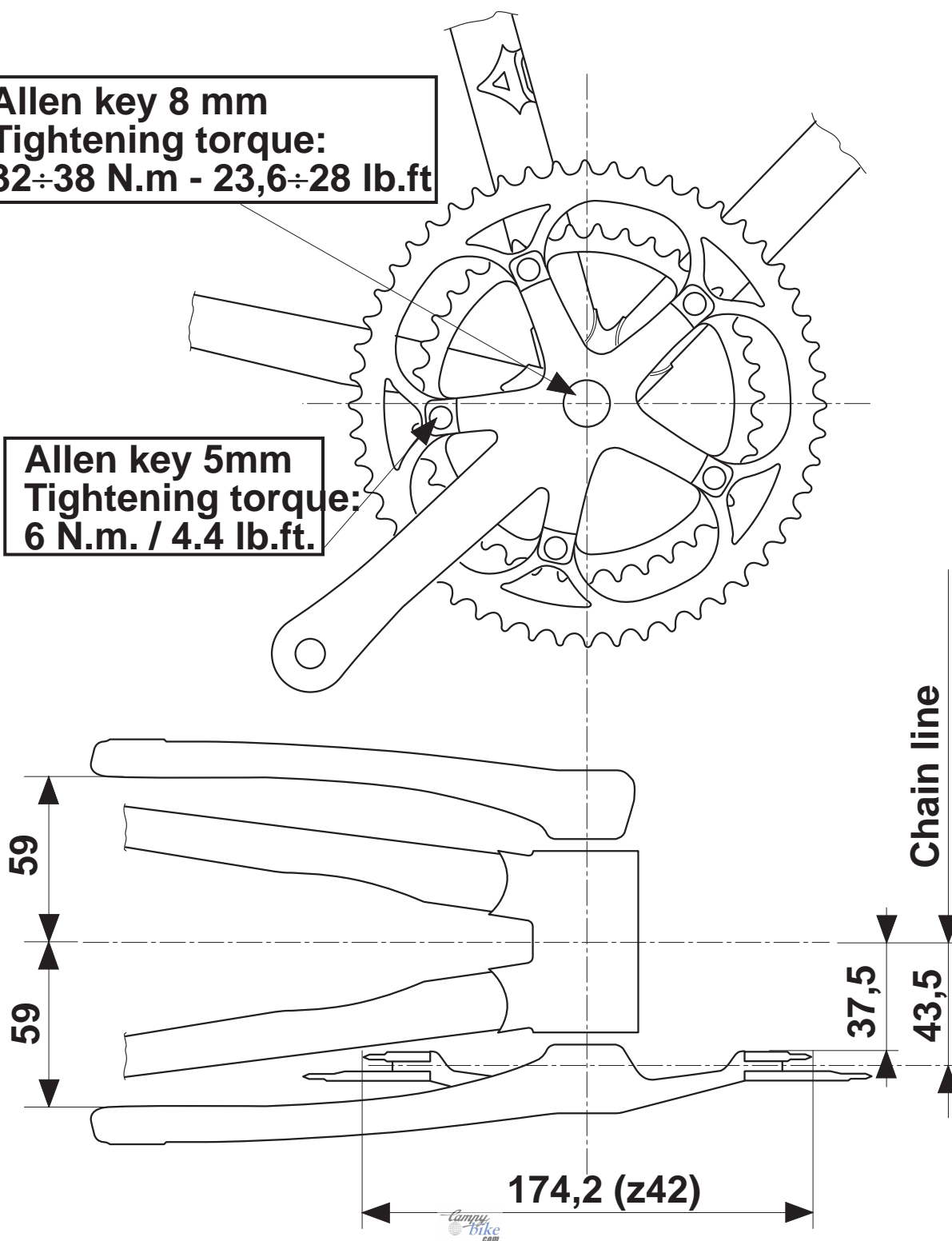


# CRANKSETS

*Record, Chorus, Athena, Veloce,  
Mirage, Avanti*

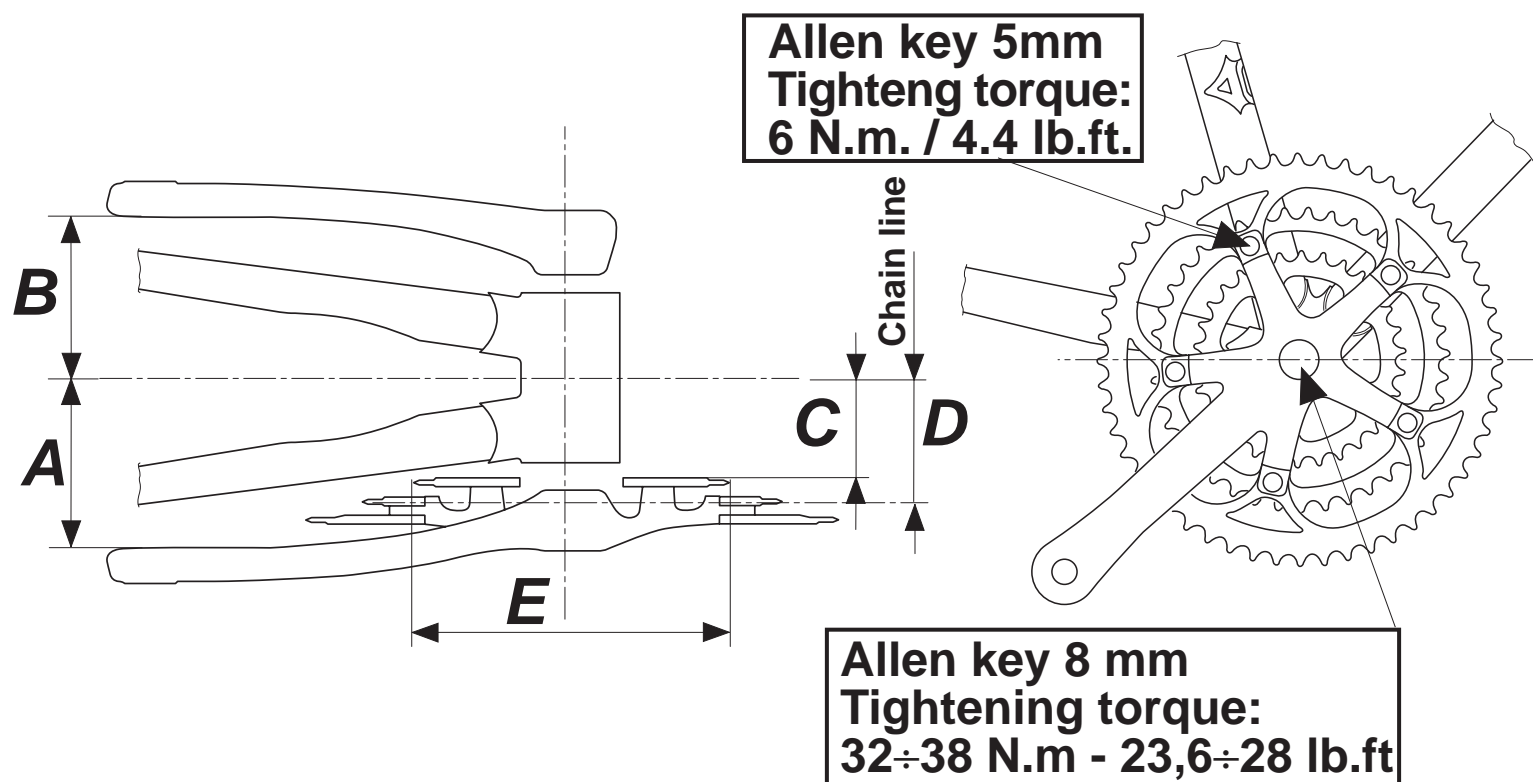
Allen key 8 mm  
Tightening torque:  
32÷38 N.m - 23,6÷28 lb.ft

Allen key 5mm  
Tightening torque:  
6 N.m. / 4.4 lb.ft.



# CRANK SETS

## *Racing T, Veloce T, Mirage T*

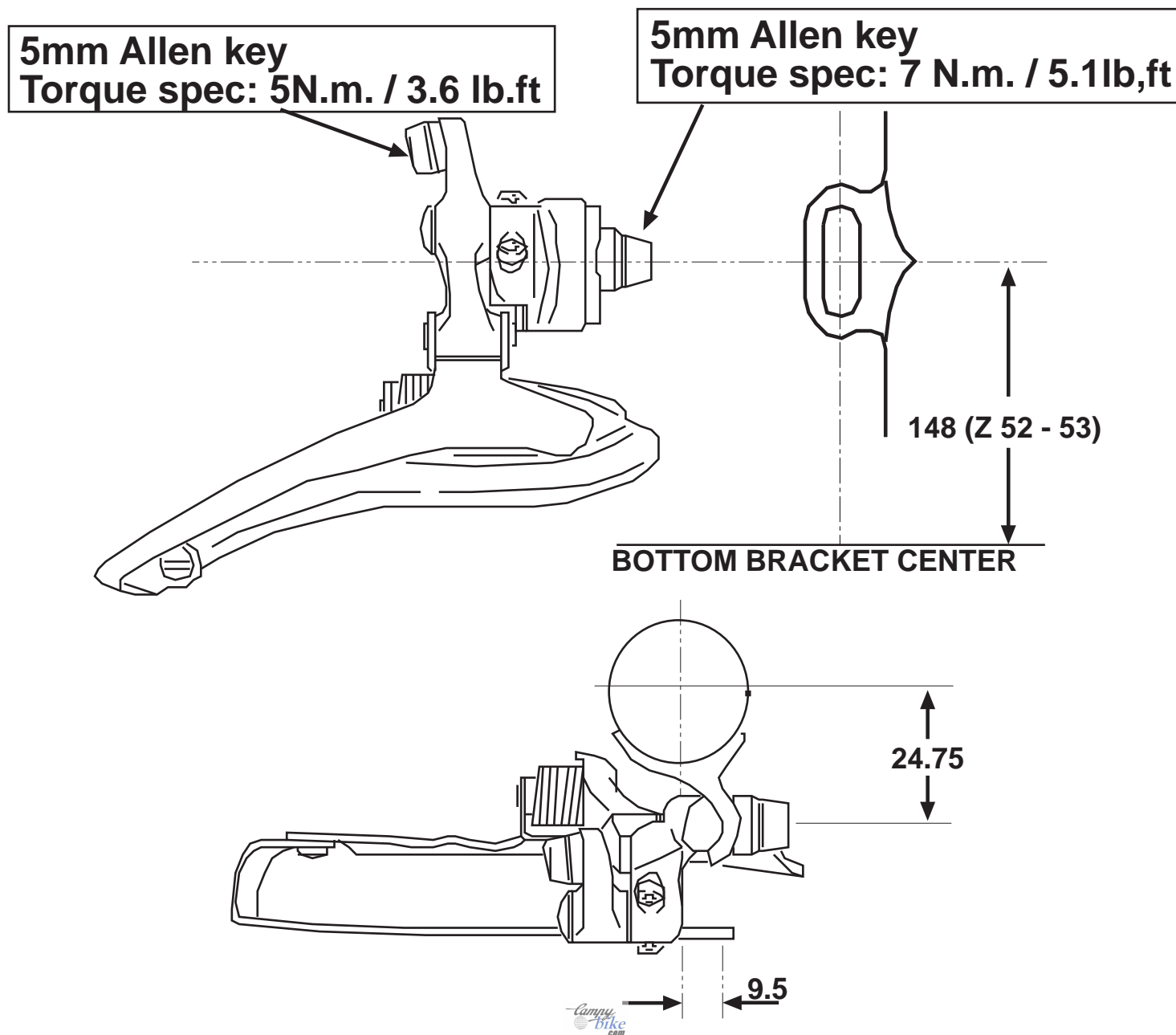


<i>model</i>	<i>A</i>	<i>B</i>	<i>C</i>	<i>D</i>	<i>E</i>	<b>111mm Axle</b>
<i>Racing T</i>	65.5	65.5	35.5	45	134	
<i>Veloce T</i>	65.5	65.5	35.5	45	134	
<i>Mirage T</i>	65.5	65.5	35.5	45	134	

# FRONT DERAILLEURS

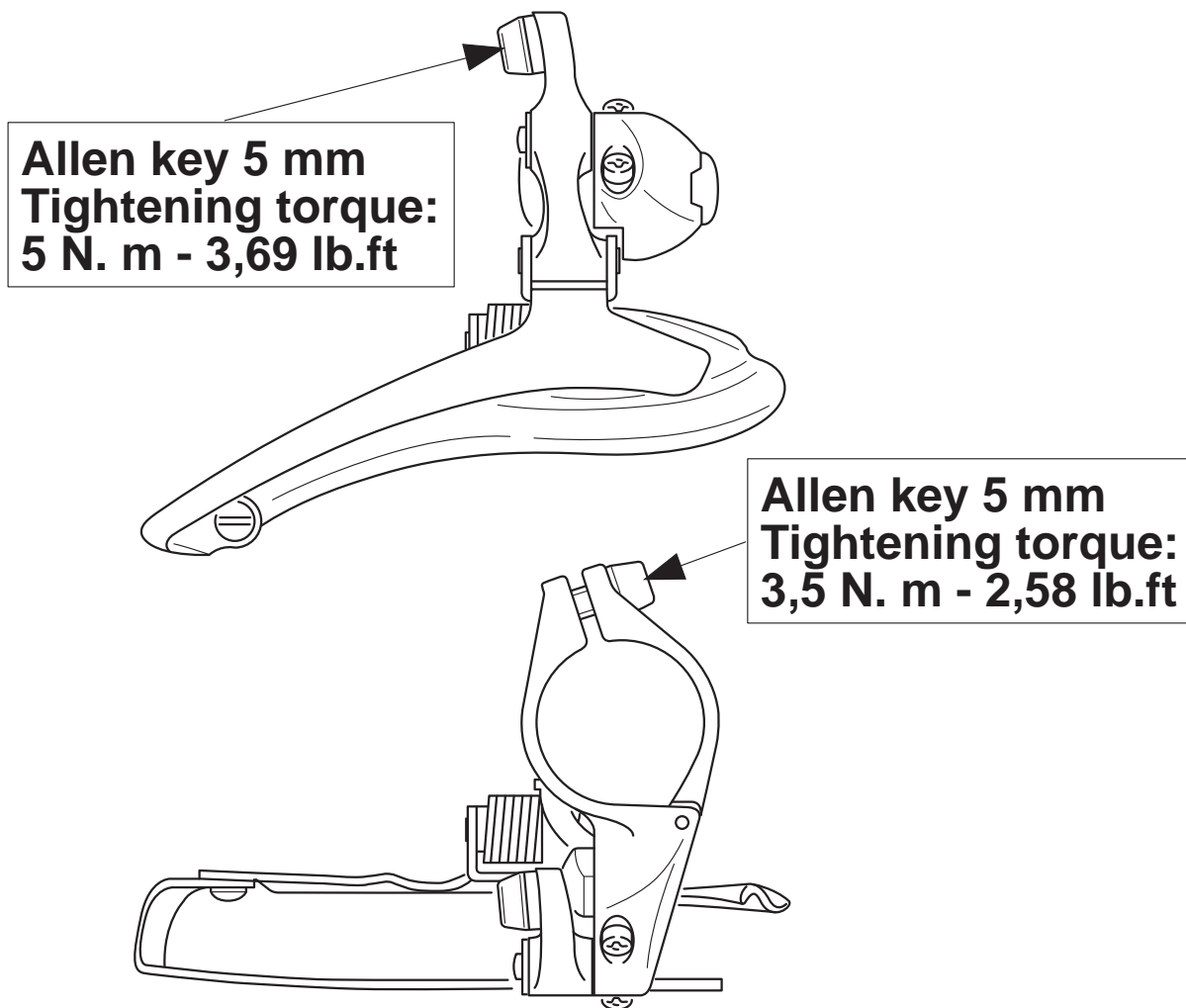
## *Braze on*

*Record, Chorus, Veloce  
Avanti*



# FRONT DERAILLEUR

## *Clamp on*

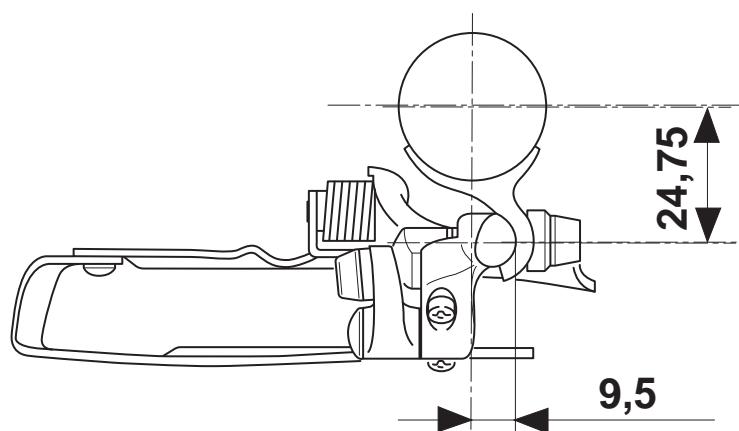
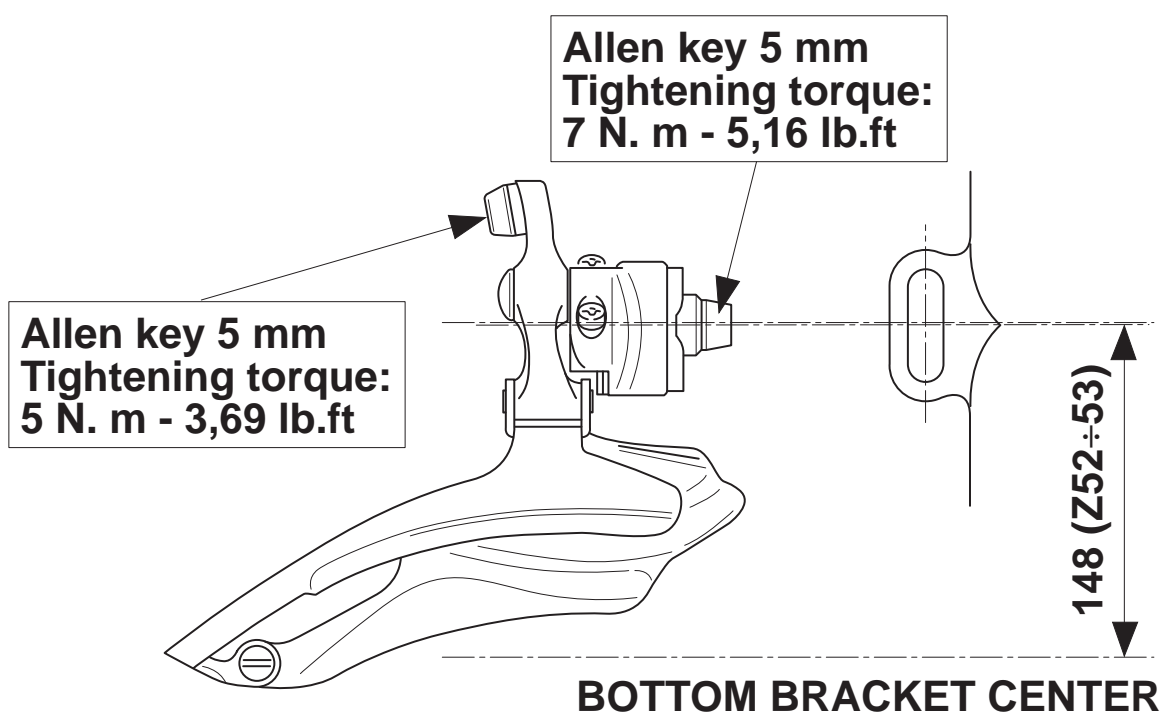


model	size available
<b><i>Record</i></b>	28.6, 32, 35mm
<b><i>Chorus</i></b>	28.6, 32, 35mm
<b><i>Veloce</i></b>	28.6, 32, 35mm
<b><i>Avanti</i></b>	28.6

# FRONT DERAILLEUR

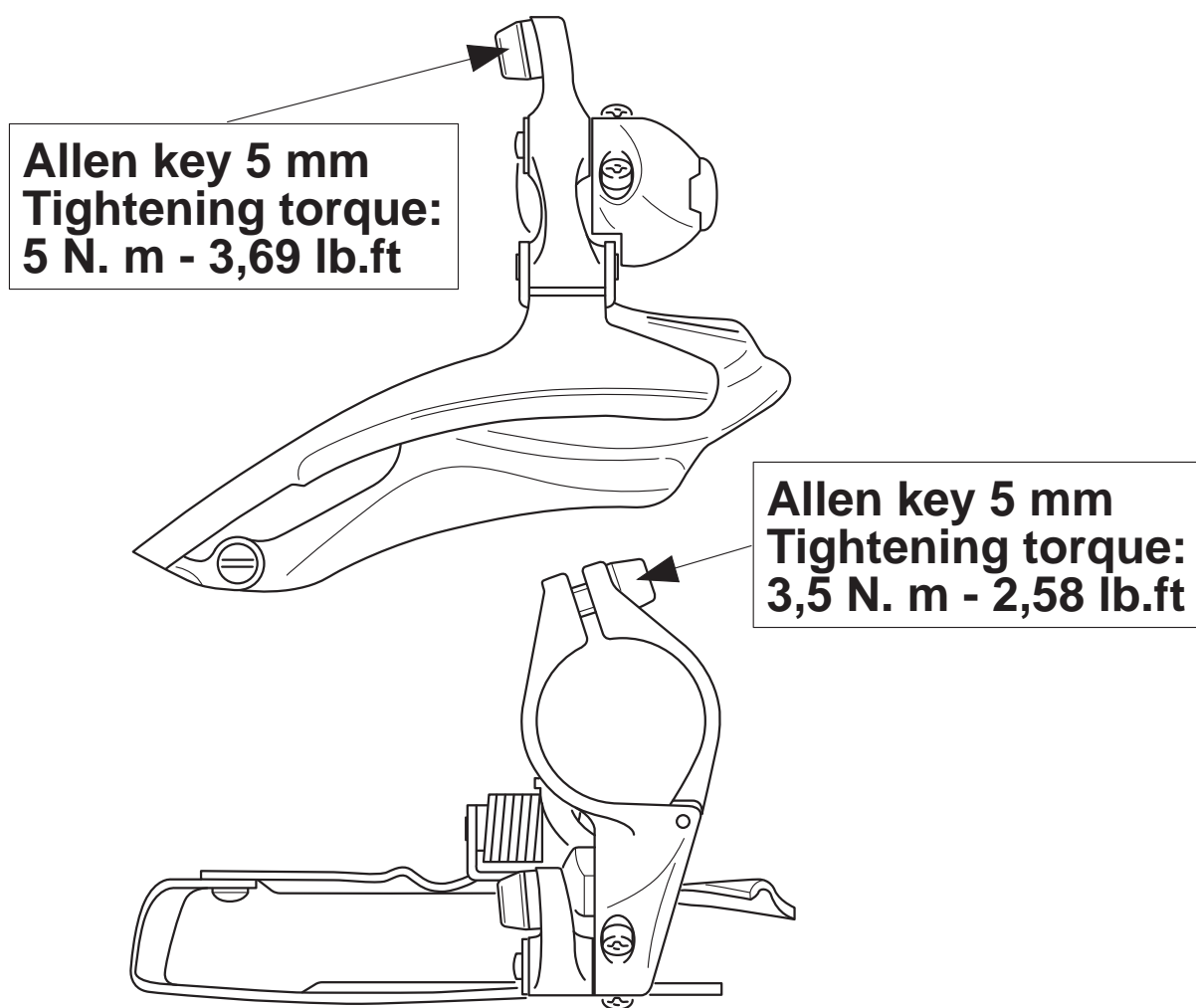
## *Braze on, Triple*

*Racing T, Veloce T, Avanti T*



# FRONT DERAILLEUR

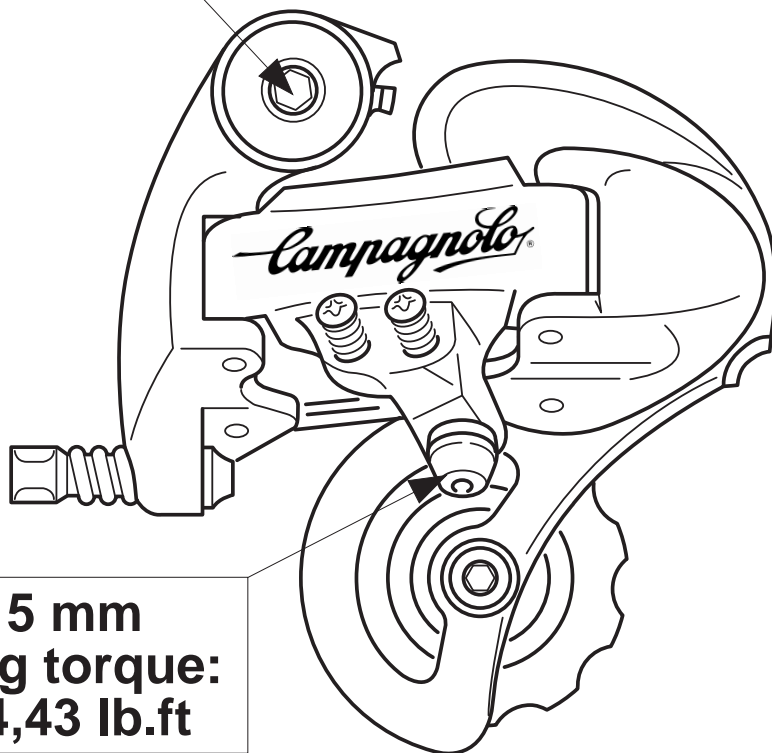
## *Clamp on, Triple*



model	size available
<i>Racing T</i>	28.6, 32, 35mm
<i>Veloce T</i>	28.6, 32mm
<i>Avanti T</i>	28.6mm

# REAR DERAILLEURS

Allen key 5 mm  
Tightening torque:  
15 N. m - 11,07 lb.ft



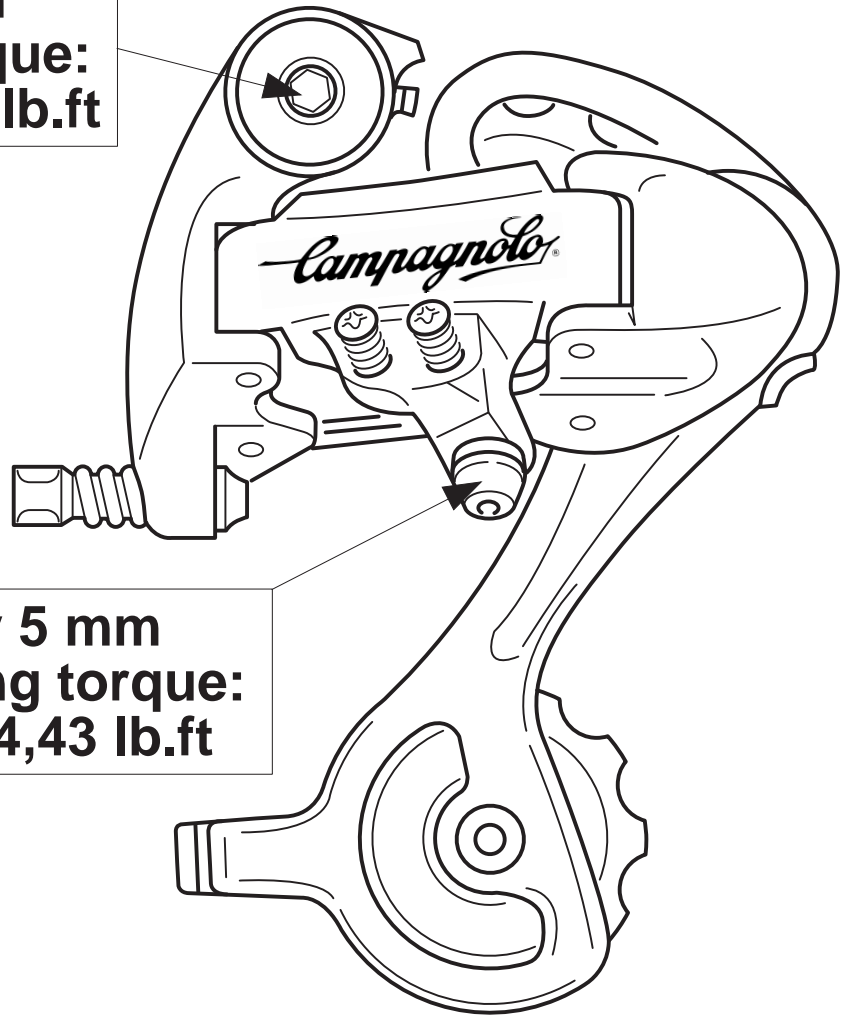
Allen key 5 mm  
Tightening torque:  
6 N. m - 4,43 lb.ft

model	max cog	capacity
<i>Record</i>	26t	27t
<i>Chorus</i>	26t	27t
<i>Athena</i>	26t	27t
<i>Veloce</i>	26t	27t
<i>Mirage</i>	28t	28t
<i>Avanti</i>	28t	28t

# REAR DERAILLEURS

## *Triple*

Allen key 5 mm  
Tightening torque:  
15 N. m - 11,07 lb.ft

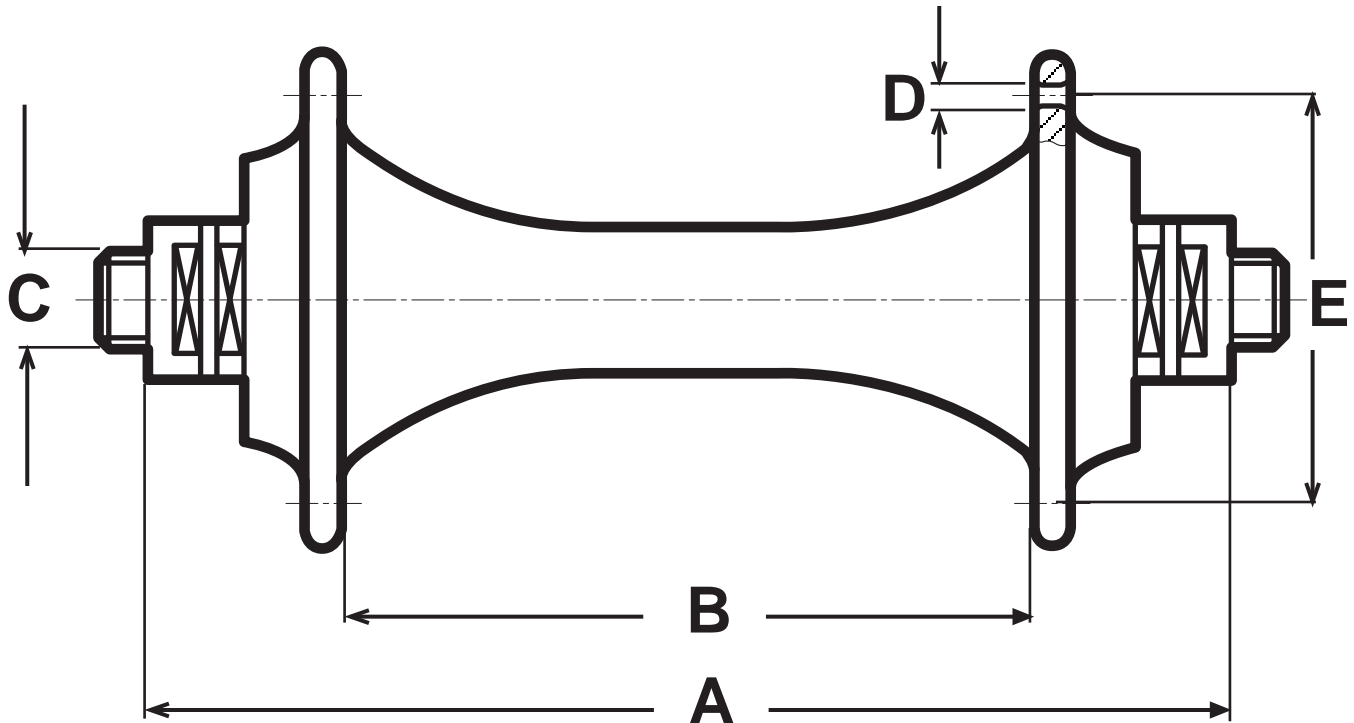


Allen key 5 mm  
Tightening torque:  
6 N. m - 4,43 lb.ft

model	max cog	capacity
<i>Racing T</i>	28t	37t
<i>Veloce T</i>	28t	37t
<i>Mirage T</i>	28t	37t
<i>Avanti T</i>	28t	37t



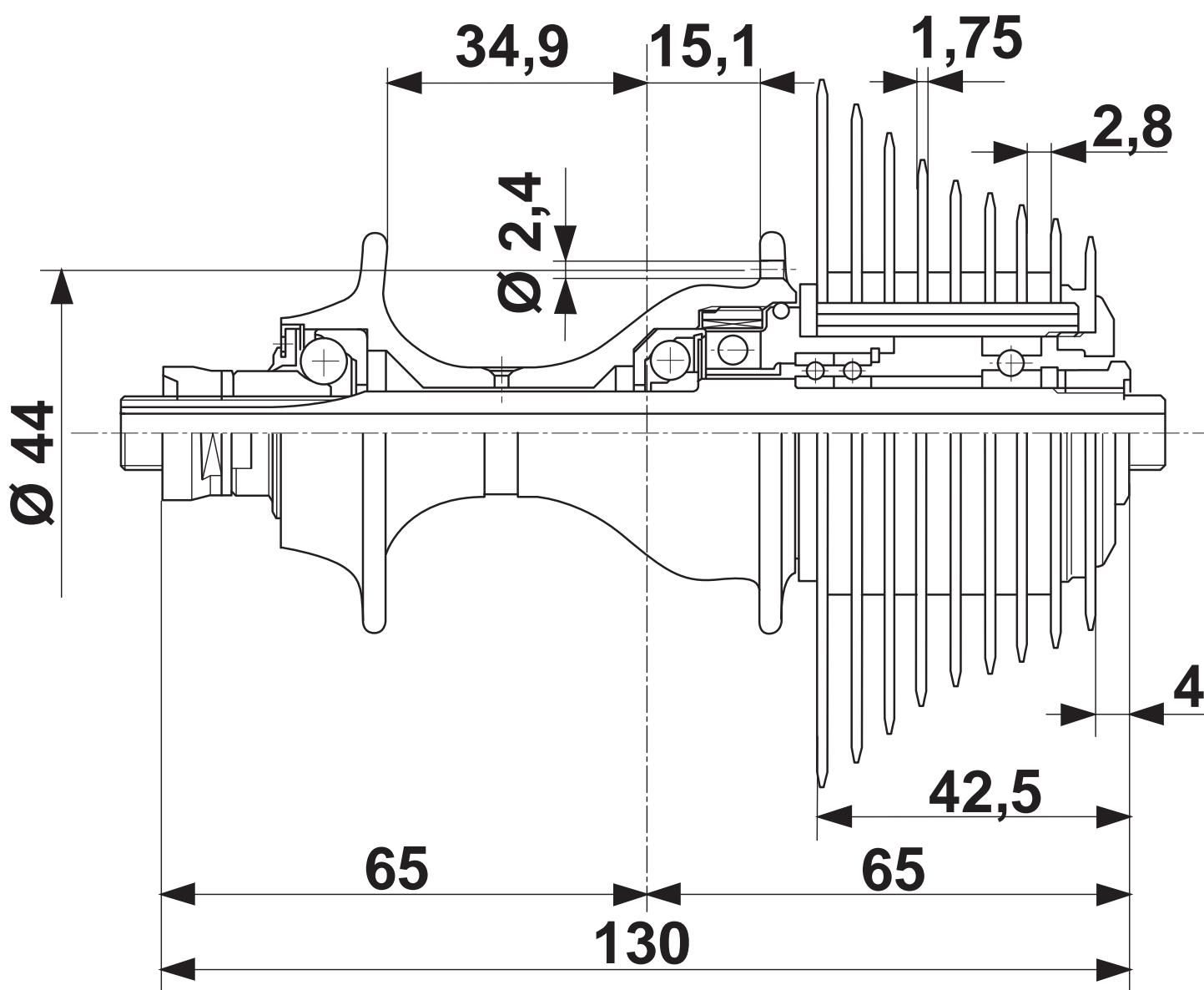
# FRONT HUBS



model	A	B	C	D	E
<b><i>Record</i></b>	<b>100</b>	<b>65</b>	<b>9</b>	<b>2.4</b>	<b>38.5</b>
<b><i>Chorus</i></b>	<b>100</b>	<b>65</b>	<b>9</b>	<b>2.6</b>	<b>38.5</b>
<b><i>Athena</i></b>	<b>100</b>	<b>65</b>	<b>9</b>	<b>2.6</b>	<b>38.5</b>
<b><i>Veloce</i></b>	<b>100</b>	<b>65</b>	<b>9</b>	<b>2.6</b>	<b>38.5</b>
<b><i>Mirage</i></b>	<b>100</b>	<b>65</b>	<b>9</b>	<b>2.6</b>	<b>38.5</b>
<b><i>Avanti</i></b>	<b>100</b>	<b>64</b>	<b>9</b>	<b>2.7</b>	<b>40</b>

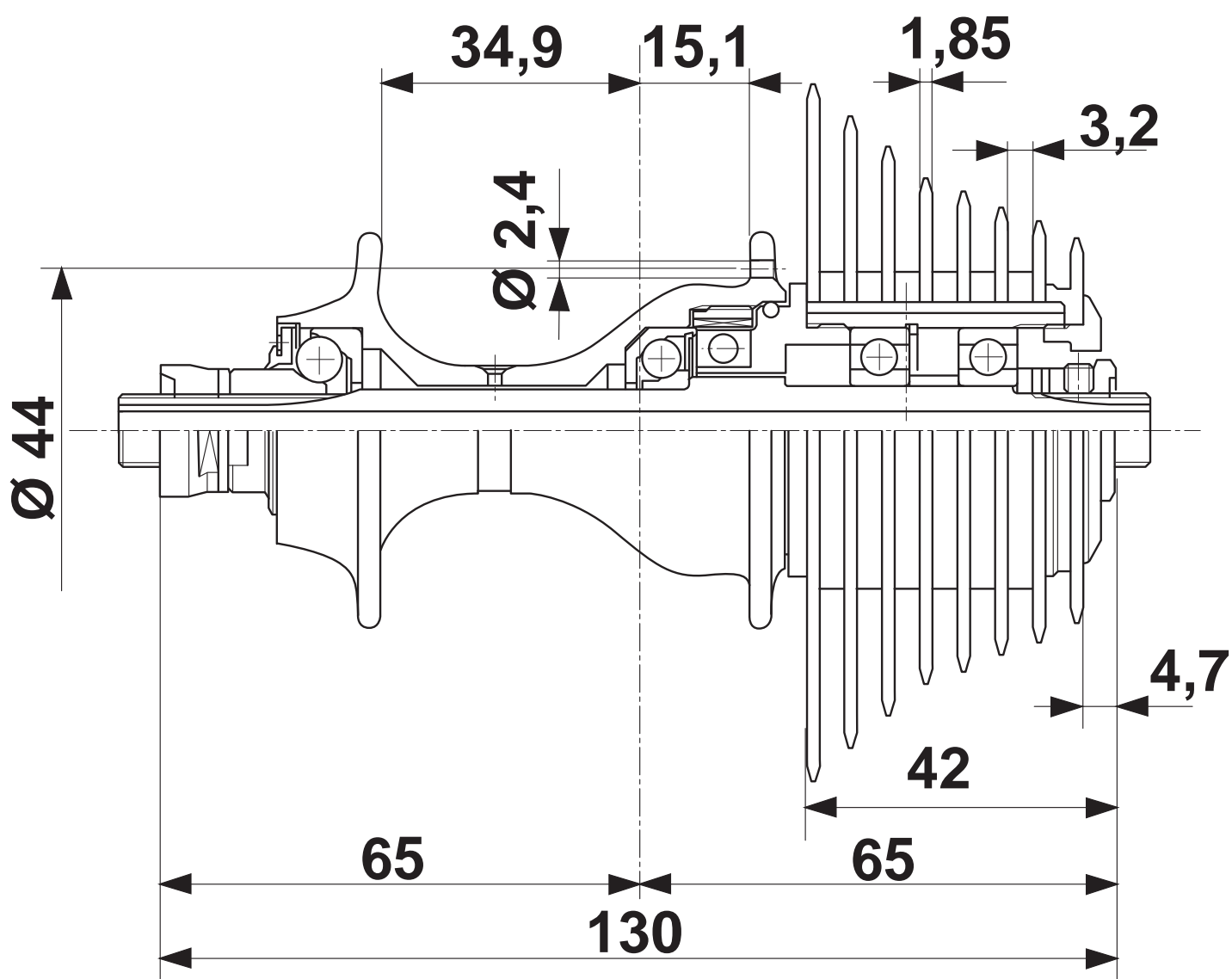
# REAR HUBS 9 SPEED

*Record, Chorus, Athena,  
Veloce*



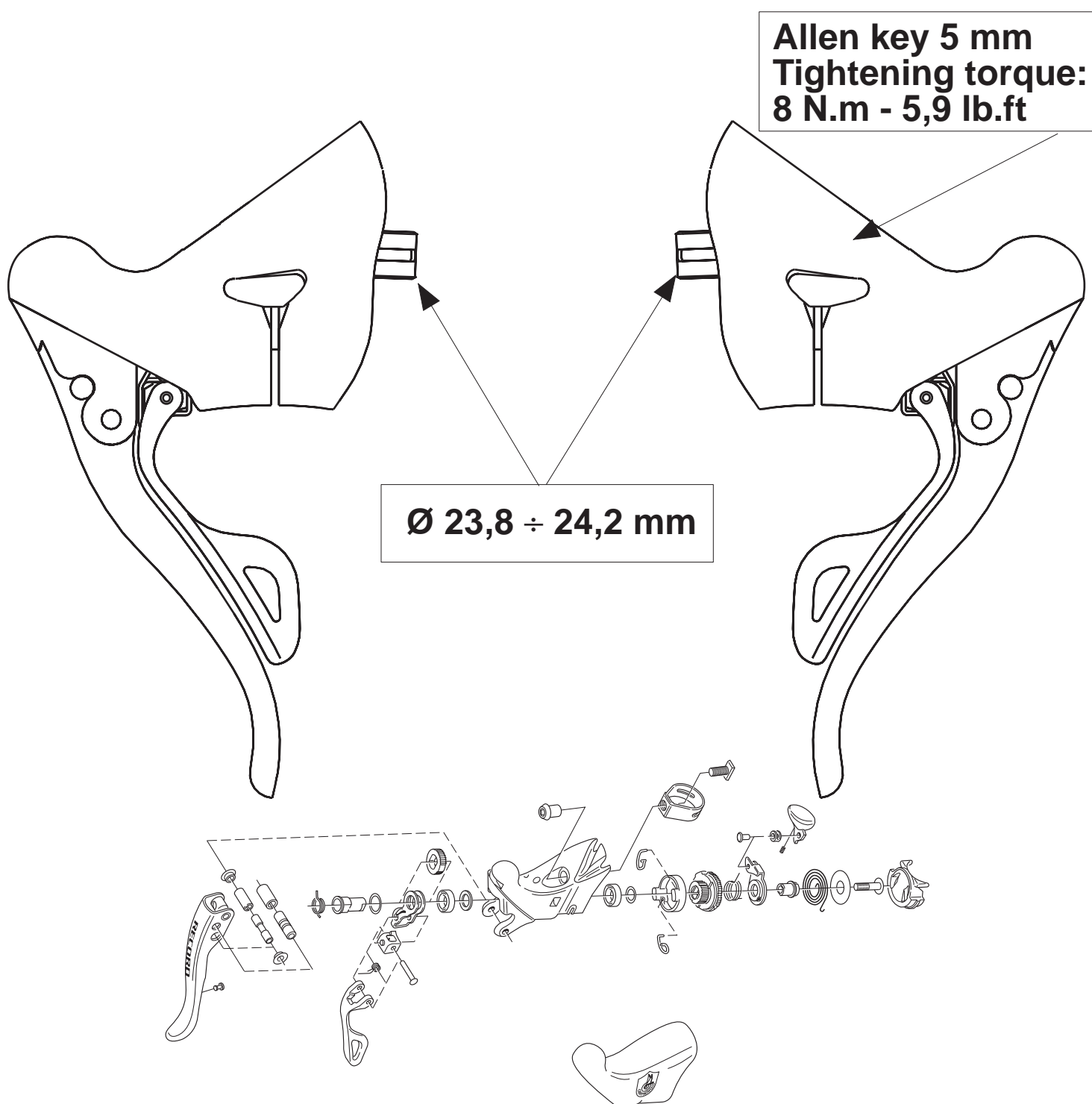
# REAR HUBS 8 SPEED

## *Mirage, Avanti*



# 9 SPEED ERGOPOWER

## *New Style Record Chorus*

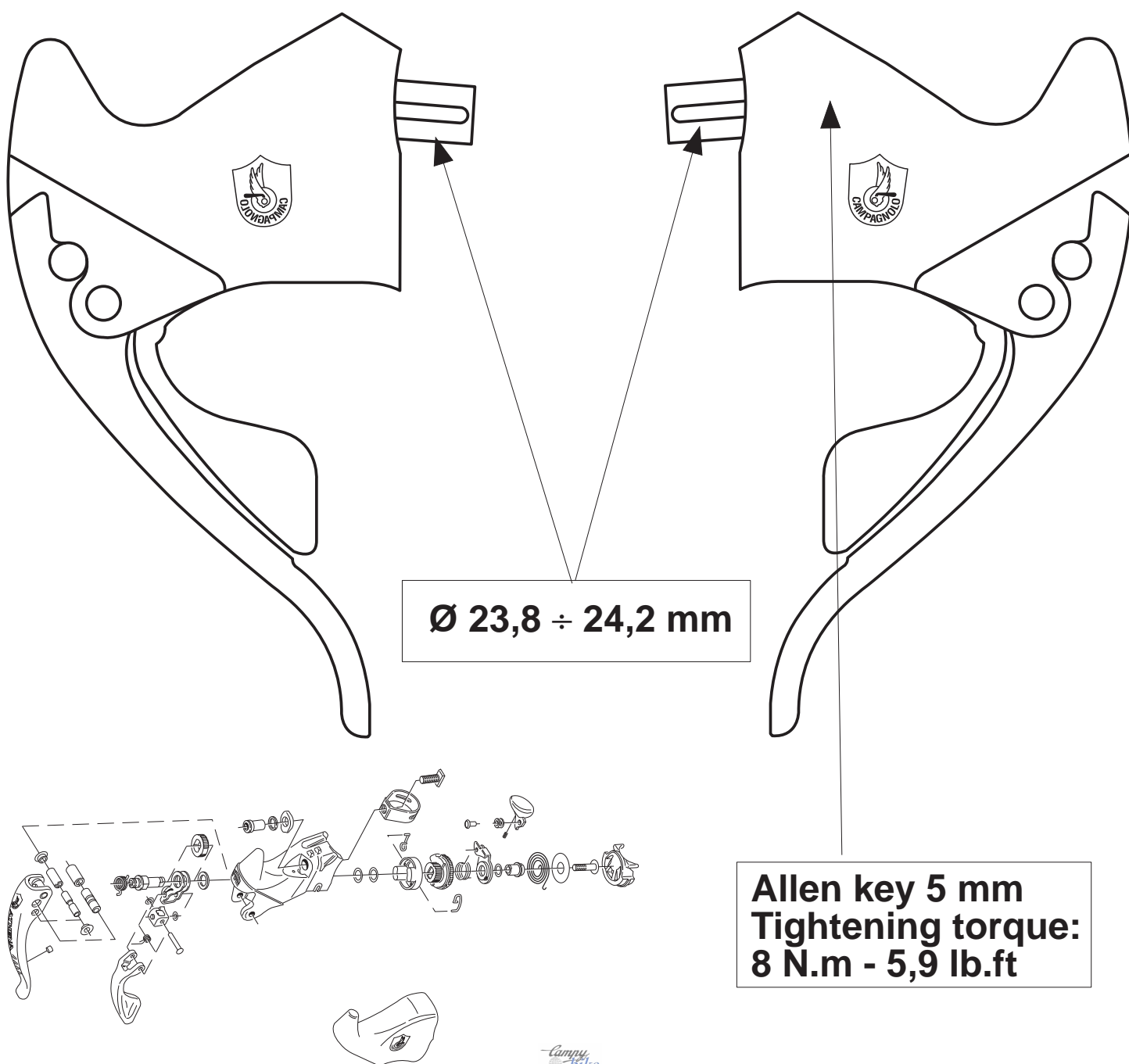


# 9 SPEED ERGOPOWER

*Athena, Veloce*

# 8 SPEED ERGOPOWER

*Mirage, Avanti*



# DUAL PIVOT BRAKES

*Record, Chorus, Athena,  
Veloce, Mirage, Avanti*

